

Tokyo 2020 Olympic Games

Tours and Packages


**KINGDOM
SPORTS**
GROUP



TOKYO 2020



Authorised
Ticket Reseller

July 23 – August 8, 2021



Welcome to your Premier Olympic Games Experience with Kingdom Sports Group

Tokyo 2020
未来（あした）をつかもう

July 23 – August 8, 2021

Japan, a country steeped in rich history and tradition and at the forefront of technological advancement is a destination like no other in the world.

The capital Tokyo will be host city for the 2020 Summer Olympic and Paralympic Games.

The last time Japan hosted the Summer Olympic Games was in 1964, also in Tokyo. 56 years later, utilising some venues that were used in the last Games around a Heritage Zone, and this time in 2021, new venues around the Tokyo Bay Zone, the Olympic Games is anticipated to be the most watched event in world history.

Kingdom Sports Group (KSG) represents a large number of National Olympic Committees on an exclusive basis.

Our role for Tokyo is to deliver to our exclusive territories packages including tickets, accommodation, experiences and more.

Authorised and Official.

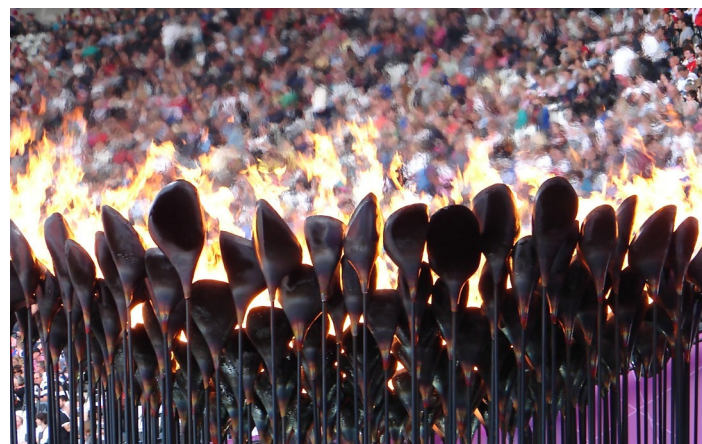
The team at KSG will be able to provide all the help you need to attend Tokyo 2020.

The Games in Tokyo 2020 will be one of the most sought after sporting events, and we will take you there!

Discover Tomorrow – Tokyo 2020



Visit www.kingdomsg.com or call +61 2 9904 9225



Authorised and Exclusive Packages to the Tokyo 2020 Olympic Games

The Tokyo 2020 Olympic Games is the event of the year and with Kingdom Sports Group you can witness the Games your way. From event tickets and accommodation to bespoke guided tours, KSG offers packaging including accommodation at multiple ratings. Select your choice of guided tours, experience specific sports or a multi-sports program and attend the Olympic Games like never before. At KSG we ensure you will be taken care of with full inventory of event ticket selections where applicable and a variety of packages to suit all budgets.

With over 20 years of Olympic Games and major event experience, Kingdom Sports Group is one of the world leaders in Olympic Games packages and travel programs. We understand and know how to ensure your experience with us will be memorable.

Visit our website or give us a call to start your **Dream Olympic Experience**.



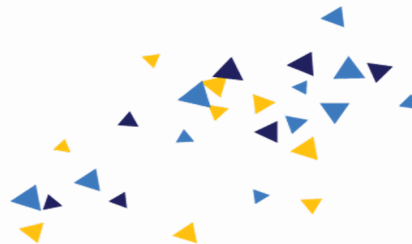
Visit www.kingdomsg.com or call **+61 2 9904 9225**

Exclusive territorial appointments for the Tokyo 2020 Olympics

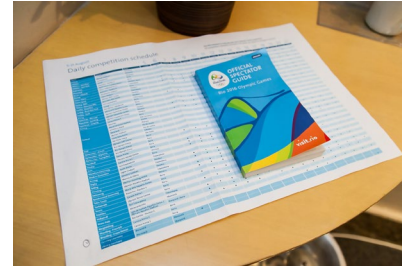
Kingdom Sports Group is proud to partner with a record number of National Olympic Committees where we are appointed their Exclusive and Authorised Ticket Reseller (ATR) for the Tokyo 2020 Olympic Games.



Always purchase your event tickets through an accredited agent. Be wary of buying tickets through agents that are not accredited as the tickets sold are often not official tickets and you will likely be denied entry to the venue. For further information please refer to the Tokyo 2020 Website at www.tokyo2020.jp



Visit www.kingdomsg.com or call +61 2 9904 9225

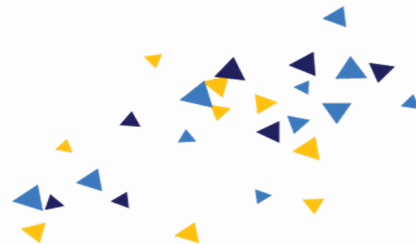


Previous Olympic Games Experience

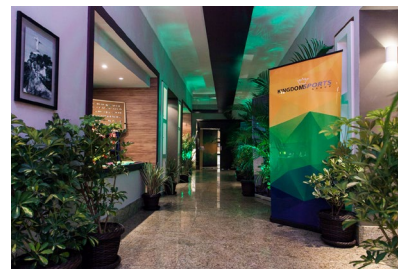
Tokyo 2020 will be the 11th Olympic Games (Summer, Winter, Youth) that Kingdom Sports Group will have an involvement in with ticketing and sports tour programs on an official basis. We are proud to be partnered with and appointed by the largest number of National Olympic Committees in the world, delivering exceptional service and experiences.

During Rio 2016 we offered tickets and packages to 43 nations (whose population collectively total a staggering 1 billion residents) being KSG exclusive and authorised territories.

With thousands of hotel room nights across 3,4 and 5 star properties, multiple corporate and hospitality programs, thousands of tickets to spectators, KSG has the experience to deliver events and programs. **We are the Olympic Games experts.**



Visit www.kingdomsg.com or call +61 2 9904 9225



Kingdom Sports Group Hospitality Venue

Kingdom Sports Group will be operating our own exclusive Hospitality Venue located at the 5 Star Hilton Shinjuku.

Invite your guests, strengthen your relationships and reward your key clients and star performers by hosting their special corporate presentations in the KSG branded hospitality venue.

All clients will be welcomed with a drinks event at this hospitality venue and can be CO-BRANDED through the use of banners upon entry and you can provide your own corporate merchandise gifts to your clients at this time.



Visit www.kingdomsg.com or call +61 2 9904 9225

How to purchase your Tokyo 2020 Games Experience

From June 2019 fully inclusive packages that include accommodation, event tickets, experiences and more go on sale to the Tokyo 2020 Olympic Games. Kingdom Sports Group will offer a number of ways for you to be able to attend the Olympic Games in tailor made programs that will showcase more than 40+ different sports. Every ticket to every session is available, but are not expected to last long.

The information below explains a number of ways you can attend Tokyo 2020 (timeline is subject to change)

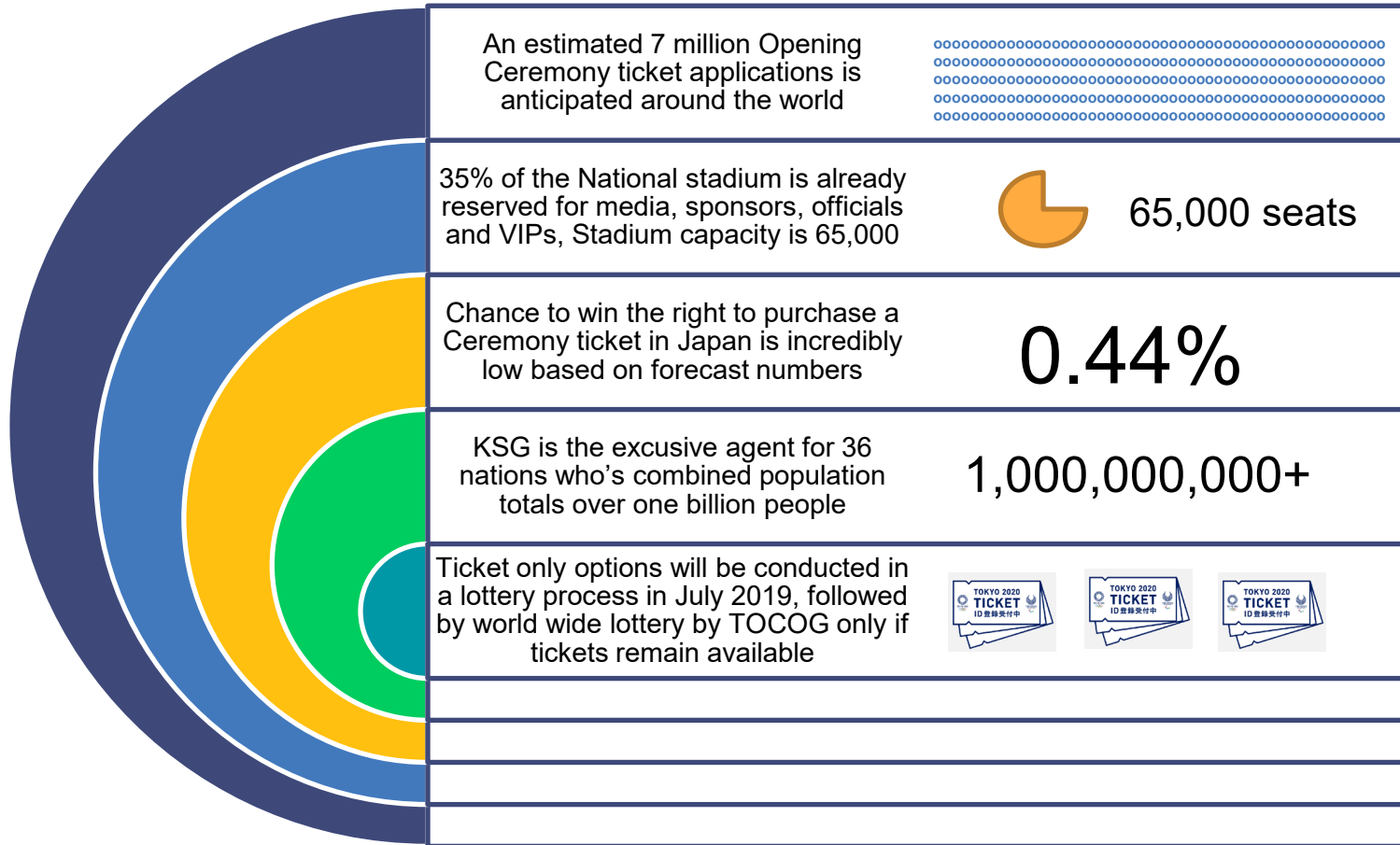


- 1 Packages including tickets go on sale to the general public and remain on sale until Games Time
- 2 Standalone event ticket lottery commences
- 3 Hospitality packages with high demand event tickets go on sale
- 4 Remaining standalone tickets go on sale
- 5 Seat assignment complete and ticket delivery commences



Visit www.kingdomsg.com or call **+61 2 9904 9225**

Important Statistics – The Games at a glance



Important Statistics – The Games at a glance

TICKET LOTTERY IN JAPAN

▶ Total amount of spectators applied for tickets in Round 1 in Japan

▶ Amount of tickets rewarded in domestic lottery



7,500,000



3,200,000

▶ Total amount of tickets applied for in Round 1 in Japan

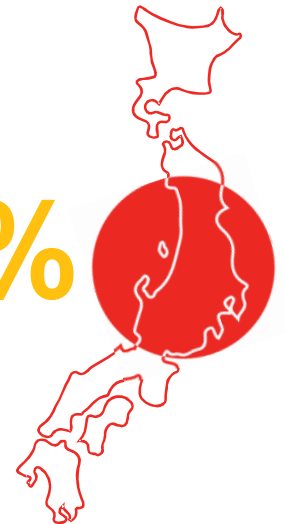
▶ Estimated % of winning applications in Japan



82,500,000



3.87%



Important Statistics – The Games at a glance

Total amount of tickets for Tokyo 2020



7,800,000

Domestic allocation to date

4,850,000



Domestic lottery tickets remaining



650,000

International sales through ATRs

1,250,000



TICKETS BY NUMBERS

International Sponsors, Domestic Sponsors, IOC and other partners



850,000

Media

350,000



Sport Federations

500,000



TOKYO 2020
Authorised
Ticket Reseller



Sports	Discipline	July										August									
		22	23	24	25	26	27	28	29	30	31	1	2	3	4	5	6	7	8	9	
Opening and Closing Ceremonies				○																○	
Aquatics	Swimming			○	🏅	🏅	🏅	🏅	🏅	🏅	🏅	🏅	🏅								
	Diving					🏅	🏅	🏅	🏅		○	○	🏅	○	🏅	○	🏅	○	🏅		
	Artistic Swimming													○	○	🏅		○	🏅		
	Water Polo				○	○	○	○	○	○	○	○	○	○	○	○	○	○	○	🏅	🏅
	Marathon Swimming															🏅	🏅				
Archery				○	🏅	🏅	🏅	○	○	○	🏅	🏅									
Athletics	Track & Field										🏅	🏅	🏅	🏅	🏅	🏅	🏅	🏅	🏅		
	Marathon													🏅						🏅	
	Race Walk											🏅						🏅	🏅		
Badminton					○	○	○	○	○	○	🏅	🏅	🏅	🏅							
Baseball / Softball	Baseball								○	○	○	○	○	○	○	○			🏅		
	Softball	○	○		○	○	○	🏅													
Basketball	3x3				○	○	○	○	🏅												
	Basketball					○	○	○	○	○	○	○	○	○	○	○	○	○	🏅	🏅	
Boxing					○	○	○	○	○	○	○	○	○			🏅	🏅	🏅	🏅	🏅	
Canoe	Slalom					○	🏅	🏅	○	🏅	🏅										
	Sprint													○	🏅	○	🏅	○	🏅		

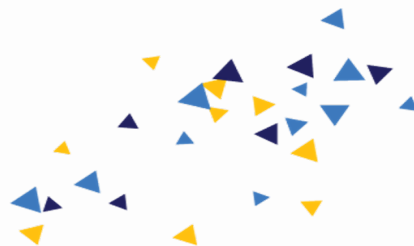


Sports	Discipline	July										August								
		22	23	24	25	26	27	28	29	30	31	1	2	3	4	5	6	7	8	9
Cycling	BMX Freestyle											○	🏆							
	BMX Racing									○	🏆									
	Mountain Bike						🏆	🏆												
	Road				🏆	🏆			🏆											
	Track													🏆	🏆	🏆	🏆	🏆	🏆	🏆
Equestrian	Dressage				○	○		🏆	🏆											
	Eventing									○	○	○	🏆							
	Jumping													○	🏆			○	🏆	
Fencing				🏆	🏆	🏆	🏆	🏆	🏆	🏆	🏆	🏆								
Football		○	○		○	○		○	○		○	○		○	○			🏆	🏆	🏆
Golf										○	○	○	🏆			○	○	○	🏆	
Gymnastics	Artistic				○	○	🏆	🏆	🏆	🏆			🏆	🏆	🏆					
	Rhythmic																	○	🏆	🏆
	Trampoline											🏆	🏆							
Handball				○	○	○	○	○	○	○	○	○	○	○	○	○	○	○	🏆	🏆
Hockey				○	○	○	○	○	○	○	○	○	○	○	○	○	🏆	🏆		
Judo				🏆	🏆	🏆	🏆	🏆	🏆	🏆	🏆	🏆								
Karate	Kata, Kumite																	🏆	🏆	🏆



Visit www.kingdomsg.com or call +61 2 9904 9225

Sports	Discipline	July										August													
		22	23	24	25	26	27	28	29	30	31	1	2	3	4	5	6	7	8	9					
Modern Pentathlon																				○	🏅	🏅			
Rowing				○	○	○	○	🏅	🏅	🏅	🏅														
Rugby								○	○	🏅	○	○	🏅												
Sailing						○	○	○	○	○	○	🏅	🏅	🏅	🏅	🏅									
Shooting	Rifle & Pistol				🏅	🏅		🏅		○	🏅	🏅	🏅	○	🏅										
	Shotgun					○	🏅			○	🏅		🏅												
Skateboarding	Park																			🏅	🏅				
	Street					🏅	🏅																		
Sport Climbing																			○	○	🏅	🏅			
Surfing						○	○	○	🏅																
Table Tennis					○	○	🏅	○	○	🏅	🏅			○	○	○	○	🏅	🏅						
Taekwondo					🏅	🏅	🏅	🏅																	
Tennis					○	○	○	○	○	○	🏅	🏅	🏅	🏅											
Triathlon							🏅	🏅					🏅												
Volleyball	Beach Volleyball				○	○	○	○	○	○	○	○	○	○	○	○	○	○	○	○	🏅	🏅			
	Volleyball				○	○	○	○	○	○	○	○	○	○	○	○	○	○	○	○	○	○	🏅	🏅	
Weightlifting					🏅	🏅	🏅	🏅	🏅					🏅	🏅	🏅	🏅	🏅							
Wrestling															○	🏅	🏅	🏅	🏅	🏅	🏅	🏅	🏅	🏅	



Accommodation in Tokyo

Greater Tokyo is the most populous Metropolis in the world, an incredible 39 million people. As a result, Japan has some of the most unique and unusual offerings for accommodation and hotel services when space is at an absolute premium. From capsule hotels to 5+ Star boutique hotels and unique styles, Tokyo has something for everyone.

Kingdom Sports Group is pleased to be able to offer a variety of room styles and types to suit all budgets and personalities. As Japan does not operate an official star rating system, our accommodation has been graded based upon our international experience and expectation, as well as the inclusions being offered within each property. Our list will change monthly so please be sure to check back often on our current room type and offers.

Star Rating	Accommodation	Room Type
5+ Star Luxury	Four Seasons Tokyo Otemachi	Deluxe King
5+ Star Deluxe	The Capitol Hotel Tokyu	Deluxe King, Deluxe Twin
5 Star Luxury (Suites)	Hilton Shinjuku	Junior Suites and King Tower Suites
5 Star	Hyatt Regency Tokyo	Club Twin, Club King, with club lounge access
5 Star	Imperial Hotel Tokyo	Suites, Double, Twin
5 Star	Cerulean Tower Tokyu Hotel	Deluxe King
4.5 Star	Sheraton Miyako Hotel	Double
4.5 Star	Mitsui Garden Hotel Ginza-gochrome	Double
4 Star	1899 Hotel Shimbashi	Double Standard
4 Star	Shinagawa Prince Hotel	Double, Twin
4 Star	JR Blossom Shinjuku	Double, Twin
4 Star	Akasaka Excel Hotel Tokyu	Double, Twin
4 Star	Tokyo Bay Maihama Hotel	Twin
3 Star	Best Western Hotel Fino Akihabara	Twin, Double
3 Star	Kichijoji Tokyu Rei Hotel	Double, Twin
3 Star	ICI HOTEL Akasaka by RELIEF	Twin
3 Star	Nest Hotel Tokyo Hanzomon	Twin



Accommodation in Tokyo

The below chart reflects some of the different rooms types and their current availability based upon room stock. This chart is updated on a regular basis and all requests need to be confirmed by the KSG team. Pre-sales via the Elite Club and corporate sponsors have reduced some stock levels in certain waves, so it is important to please check availability prior to any final confirmation being issued. (as of 9th September 2020)

ACCOMMODATION AVAILABILITY INDICATORS

Hotel Name	Star Rating	Room Type	22-Jul	23-Jul	24-Jul	25-Jul	26-Jul	27-Jul	28-Jul	29-Jul	30-Jul	31-Jul	1-Aug	2-Aug	3-Aug	4-Aug	5-Aug	6-Aug	7-Aug	8-Aug
Four Seasons Four Seasons Tokyo Otema	5+ Star Luxury	Executive Suite	●	●	●	●	●	●	●	●	●	●	●	●	●	●	●	●	●	●
Four Seasons Four Seasons Tokyo Otema	5+ Star Luxury	Deluxe Twin	●	●	●	●	●	●	●	●	●	●	●	●	●	●	●	●	●	●
Four Seasons Four Seasons Tokyo Otema	5+ Star Luxury	Deluxe King	●	●	●	●	●	●	●	●	●	●	●	●	●	●	●	●	●	●
Hilton Shinjuku	5 Star Deluxe	King Tower Suite	●	●	●	●	●	●	●	●	●	●	●	●	●	●	●	●	●	●
Hilton Shinjuku	5 Star Deluxe	Junior Suite	●	●	●	●	●	●	●	●	●	●	●	●	●	●	●	●	●	●
Hilton Shinjuku	5 Star Deluxe	Standard King / Twin	●	●	●	●	●	●	●	●	●	●	●	●	●	●	●	●	●	●
Imperial Hotel	5 Star Deluxe	Twin Room	●	●	●	●	●	●	●	●	●	●	●	●	●	●	●	●	●	●
Imperial Hotel	5 Star Deluxe	King Room	●	●	●	●	●	●	●	●	●	●	●	●	●	●	●	●	●	●
The Capitol Hotel Tokyu	5 Star Deluxe	King Standard	●	●	●	●	●	●	●	●	●	●	●	●	●	●	●	●	●	●
Grand Hyatt Tokyo	5 Star Deluxe	King Standard	●	●	●	●	●	●	●	●	●	●	●	●	●	●	●	●	●	●
The Park Hyatt	5 Star Deluxe	Twin Standard	●	●	●	●	●	●	●	●	●	●	●	●	●	●	●	●	●	●
The Park Hyatt	5 Star Deluxe	Double Standard	●	●	●	●	●	●	●	●	●	●	●	●	●	●	●	●	●	●
Cerulean Tower Tokyo Hotel	5 Star Standard	Double Standard	●	●	●	●	●	●	●	●	●	●	●	●	●	●	●	●	●	●
Hyatt Regency Club Rooms	5 Star Standard	Club King with Club access	●	●	●	●	●	●	●	●	●	●	●	●	●	●	●	●	●	●
Grand Prince Hotel New Takanawa	4.5 Star	Twin Standard	●	●	●	●	●	●	●	●	●	●	●	●	●	●	●	●	●	●
Dia-ichi Hotel Tokyo	4.5 Star	Twin Standard	●	●	●	●	●	●	●	●	●	●	●	●	●	●	●	●	●	●
Sheraton Miyako Hotel Tokyo	4.5 Star	Double Standard	●	●	●	●	●	●	●	●	●	●	●	●	●	●	●	●	●	●
Mitsui Garden Hotel Ginza-gochrome	4.5 Star	Double Standard	●	●	●	●	●	●	●	●	●	●	●	●	●	●	●	●	●	●
1899 Hotel Shimbashi	4 Star	Double Standard	●	●	●	●	●	●	●	●	●	●	●	●	●	●	●	●	●	●
Tokyu Stay Takanawa	4 Star	Double Standard	●	●	●	●	●	●	●	●	●	●	●	●	●	●	●	●	●	●
Shinagawa Prince Hotel Main Tower	4 Star	Twin Standard	●	●	●	●	●	●	●	●	●	●	●	●	●	●	●	●	●	●
JR Blossom Shinjuku	4 Star	Double Standard	●	●	●	●	●	●	●	●	●	●	●	●	●	●	●	●	●	●
JR Blossom Shinjuku	4 Star	Twin Standard	●	●	●	●	●	●	●	●	●	●	●	●	●	●	●	●	●	●
Akasaka Excel Hotel Tokyu	4 Star	Twin Standard	●	●	●	●	●	●	●	●	●	●	●	●	●	●	●	●	●	●
Akasaka Excel Hotel Tokyu	4 Star	Double Standard	●	●	●	●	●	●	●	●	●	●	●	●	●	●	●	●	●	●
Tokyo Bay Maihama Hotel	4 Star	Twin Standard	●	●	●	●	●	●	●	●	●	●	●	●	●	●	●	●	●	●
Mimaru Tokyo Ginza East	3.5 Star Aparthotel	Deluxe Apartment (3 or 4 pax)	●	●	●	●	●	●	●	●	●	●	●	●	●	●	●	●	●	●
Mimaru Tokyo Ginza East	3.5 Star Aparthotel	Deluxe Loft Apartment (3 or 4 pax)	●	●	●	●	●	●	●	●	●	●	●	●	●	●	●	●	●	●
Mimaru Tokyo Ginza East	3.5 Star Aparthotel	Deluxe Family Apartment (5 or 6 pax)	●	●	●	●	●	●	●	●	●	●	●	●	●	●	●	●	●	●
Shinjuku Washington Hotel	3.5 Star	Superior Twin	●	●	●	●	●	●	●	●	●	●	●	●	●	●	●	●	●	●
Nest Hotel Tokyo Hanzomon	3 Star	Twin Room (No breakfast)	●	●	●	●	●	●	●	●	●	●	●	●	●	●	●	●	●	●
ICI HOTEL Akasaka by RELIEF	3 Star	Twin Room (breakfast extra cost)	●	●	●	●	●	●	●	●	●	●	●	●	●	●	●	●	●	●
Kichijoji Tokyu Rei Hotel	3 Star	Twin Room	●	●	●	●	●	●	●	●	●	●	●	●	●	●	●	●	●	●

Key

- Sold Out
- Limited Availability
- Good Availability





Four Seasons Hotel Tokyo

5+ Star Luxury ★★★★★+

1 Chome-2 Ōtemachi, Chiyoda-ku, Tokyo
100-0004

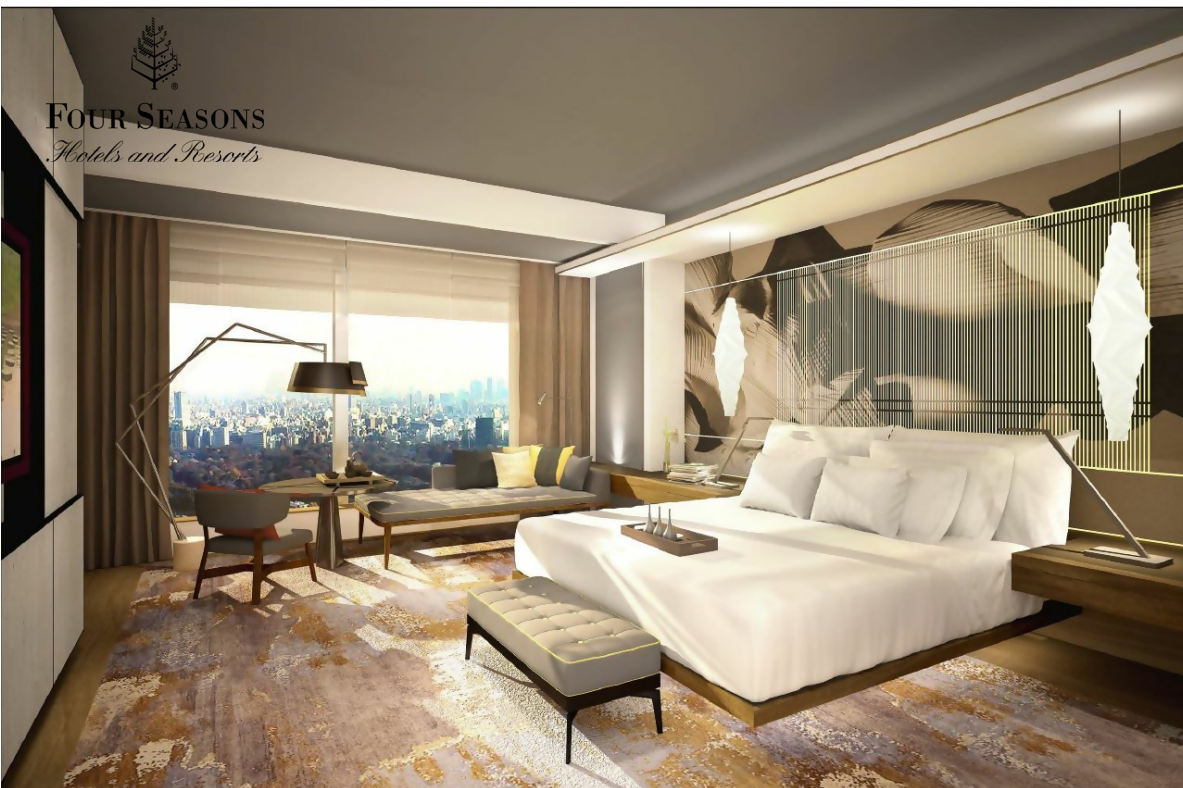
The newest and potentially the best Luxury Hotel in Tokyo ever created will open in time for the Olympic Games. The Four Seasons Otemachi is one of the most exceptional Tokyo 2020 Olympic Games accommodation options.

This property will be on the top six floors of a 39 story building OH-1 Project, with indoor and outdoor restaurants and world class dining, a 39th floor rooftop terrace, spa, fitness centre and indoor pool. District and is well situated to provide easy access to many Olympic Venues.

A landmark hotel, 190 guest rooms in one of the best locations in Tokyo.

Exceptional and Extraordinary 5 Star Luxury Accommodation





Four Seasons Hotel Tokyo
5+ Star Luxury ★★★★★+
1 Chome-2 Ōtemachi, Chiyoda-ku, Tokyo
100-0004



Standard Guest Room with different views



Visit www.kingdomsg.com or call +61 2 9904 9225



Four Seasons Hotel Tokyo

5+ Star Luxury ★★★★★+

1 Chome-2 Ōtemachi, Chiyoda-ku, Tokyo
100-0004



Spa Pool and Spa Reception



Visit www.kingdomsg.com or call +61 2 9904 9225



Four Seasons Hotel Tokyo

5+ Star Luxury ★★★★★+

1 Chome-2 Ōtemachi, Chiyoda-ku, Tokyo
100-0004



Lobby Lounge Bar and Showroom



Visit www.kingdomsg.com or call +61 2 9904 9225



Hilton Shinjuku Tokyo

5 Star Suites ★★★★★

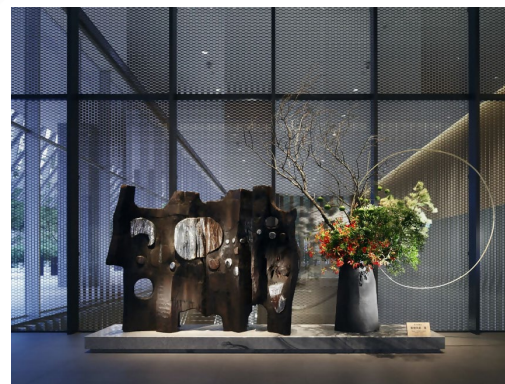
6 Chome-6-2 Nishishinjuku, Shinjuku,
Tokyo 160-0023

Located within the vibrant entertainment centre that is Shinjuku, staying at the Hilton Tokyo places guests close to many world-renowned restaurants and bars, numerous beautiful attractions, shopping, and has some of the best access to event locations around Tokyo.

The Hilton itself provides many amenities that guests can take full advantage of, from the 24-hour fitness, indoor pool, roof top tennis courts, sauna, and spa. Within the Hilton itself there are several phenomenal catering options such as Teppanyaki and sushi, Chinese as well the strawberry dessert buffet. Hilton Tokyo will ensure guests spend their Olympic experience in luxury.

Our available rooms include Superior King / Twin, Executive King / Twin, and Junior Suites.





The Capitol Hotel Tokyu

5 Star Deluxe ★★★★★+

2 Chome-10-3 Nagatacho, Chiyoda, Tokyo
100-0014

This luxury hotel located in the heart of Tokyo is consistently rated as one of the best hotels in Japan. Close to many attractions like the Tokyo Imperial Palace Tokyo midtown and Tokyo Tower, The Capitol Hotel can be your Door Step to exploring the Tokyo 2020 Olympic Games.

The Capitol Hotel contains three fantastic restaurants which provide all day dining as well as two bars. For the more active the hotel also contains an indoor swimming pool and fitness centre as well as full service spa, hot tubs and saunas. With such fantastic reviews and stunning rooms The Capitol Hotel will be on of the most sought after properties come Games time.



Grand Hyatt Tokyo

5 Star Deluxe ★★★★★+

6-10-3 Roppongi, Minato-ku, Tokyo

Roppongi Hills is the location for the Grand Hyatt Tokyo, a hotel that is commonly featured in the lists of many travellers when searching for the "Top 10 hotels in Tokyo".

With stylish and modern rooms, they are larger than most hotels in Tokyo. 10 restaurants and bars are featured in this 5 Star hotel, with an indoor swimming pool and sports gym just some of the features available to guests. The sanctuary's eight spa rooms and spacious hydrotherapy zone includes a sauna, steam room, hot bath and cold plunge pools.

Modern décor, warm ambiance, minimalistic but contemporary, features that resemble the excellence of Grand Hyatt Tokyo in an award winning luxurious style.

Our available rooms include King and Suites.





Park Hyatt Tokyo

5 Star ★★★★★

3-7-1-2 Nishishinjuku, Shinjuku-ku,
Tokyo, 163-1055.

The 5 Star Park Hyatt Tokyo occupies floors 39-52 of the Shinjuku Park Tower, famous for the setting of the 2003 film "Lost in Translation".

Always mentioned as one of the most magnificent hotels in Tokyo with some of the best views, you can even see Mt Fuji from the stunning indoor pool! Just wait until you are able to experience the delights from the New York Grill & Bar on the 52nd floor!

The spacious 45sqm rooms offer a King Bed, walk in closet, deep soaking bathtub and free Wi-Fi access.

A fitness centre, library, a pastry boutique, French and Japanese cuisine, so much more to experience at the Park Hyatt Tokyo!





Hyatt Regency

5 Star ★★★★★

2-7-2 Nishi-Shinjuku, Shinjuku, Tokyo,
160-0023

The Hyatt Regency boasts an amazing location in Shinjuku, the entertainment centre of Tokyo. Shinjuku is host to incredible bars, restaurants, and shopping. The Hyatt Regency is also one of the most centrally located accommodation options when attending to the Tokyo 2020 Olympic Games.

Hyatt Regency contains a beautiful French restaurant, Michel Troisgros and Chinese at the Jade Gardens and two other eateries, Caffe and Miyako. The fitness centre, stunning pool and spa are also available to guests.

Our room types are all Club Rooms with Club Lounge access.





Imperial Hotel Tokyo

5 Star and Suites ★★★★★

1 Chome-1-1 Uchisaiwaicho, Chiyoda,
Tokyo 100-8558

Located within a 3 minute walk of three different train stations the Imperial hotel provides luxury and convenience. Closely located to attraction such as the Imperial Palace as well as Ginza guests will not be find themselves bored between events.

The Imperial Hotel has been running since 1890, and with such long and successful history it is easy to see why this hotel in still one of the best in Tokyo. Guest have access to a fitness centre, indoor swimming pool, beauty salon as well as numerous shop within the hotel. The elegantly designed rooms boast flat screen tvs, Wi-fi as well as seating areas and an ensuite.





Cerulean Tower Tokyu Hotel

5 Star ★★★★★

26-1 Sakuragaokacho, Shibuya, Tokyo
150-8512

The Cerulean towers located in Shibuya provides easy access to the Tokyo 2020 Olympic Games. Closely located to train line, the Cerulean Tower is accessible from most of Tokyo. With many attractions like the Meiji Shrine and Harajuku only 3 minutes away by train guests will not be short of things to do between events.

Within the hotel guests can make full use of the pool, fitness centre, spa or explore the in-house patisserie or nursery. The Cerulean also boasts nine different restaurants as well as a bar located on the top floor to ensure every drink you have will come with a spectacular view.





Sheraton Miyako Hotel

4.5 Star ★★★★★

1 Chome-1-50 Shirokanedai, Minato City,
Tokyo 108-8640

Enjoy a warm welcome and familiar comforts at Sheraton Miyako Hotel Tokyo. Located in the center of Tokyo in Shirokanedai, a district renowned for its greenery, this hotel is an oasis in the centre of a large metropolis.

Japanese and modern Asian-sensibilities are fused with modern Western-style to create a welcoming environment inside the hotel. Guests are also provided with a free shuttle bus to and from Meguro Station and also to Shinagawa Station.

Within the hotel guests can make full use of the pool, fitness centre, with the hotel boasting four restaurants offering different cuisines, as well as a bar that comprises of a living room, cigar lounge and private room.





Mitsui Garden Hotel Ginza-gochrome

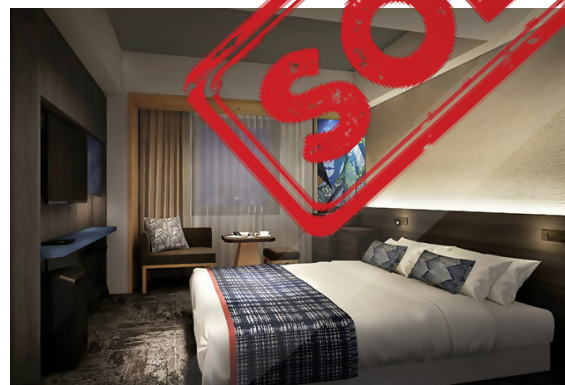
4.5 Star ★★★★★

5-201-6, Ginza, Chuo-ku, Tokyo 104-0061

Staying in the heart of Tokyo, Mitsui Garden Hotel Ginza-gochome is a brand new hotel opening in late September 2019. Guests of the Mitsui Garden Hotel are a two minute walk from the transportation hub Ueno Station.

The hotel also features a restaurant and massage services. Narita International Airport is a 40 minute train ride away.

Mitsui Garden Hotel in the location of Taito is a great location for travellers interested in city trips, temples and city walks. The hotel consists of a pool, restaurant and fitness studios for all guest to use included with their hotel stay.





1899 Hotel Shimbashi

4 Star ★★★★★

6 Chome-4-1 Shimbashi, Minato, Tokyo
105-0004

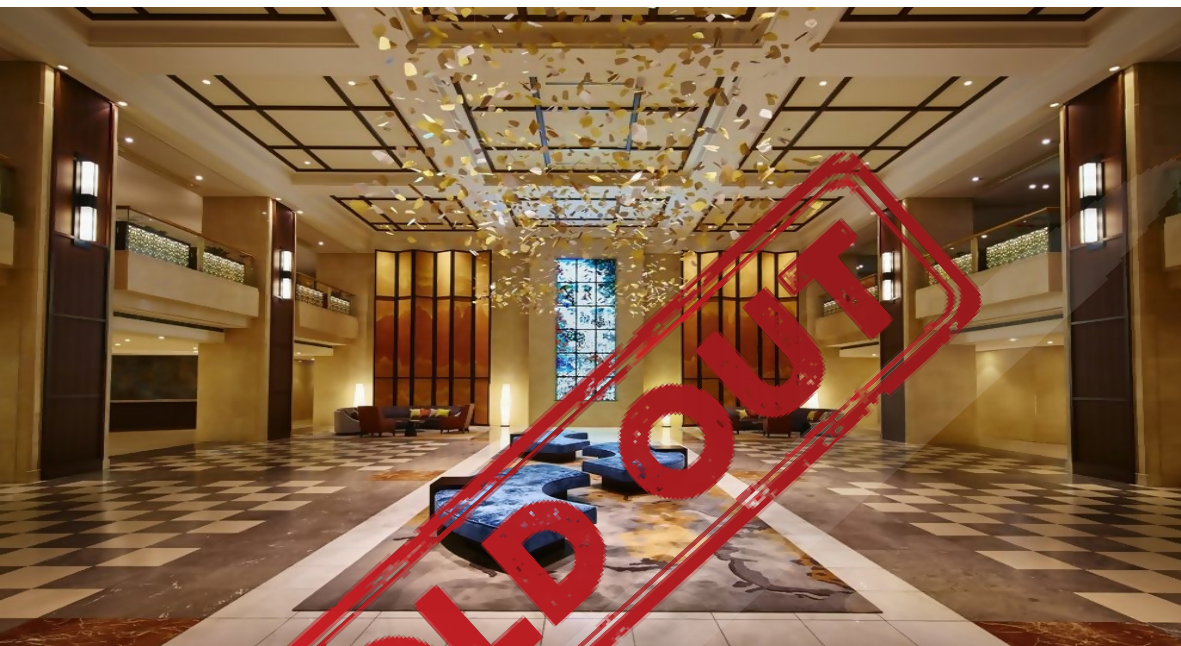
1899 Hotel Shimbashi offers a unique experience for Tokyo 2020 Olympics. The layout of the Hotel is designed to deliver a liveliness of people gathering downstairs.

1899 Hotel Shimbashi prides themselves on their tea offering tea sommeliers to anyone waiting at reception.

1899 Hotel Shimbashi also offers both a deli and a bar on site which provides a unique experience where guests can spend their time between events or exploring Tokyo.

With the soothing fragrance of exotic tea drifting through the air 1899 Hotel Shimbashi ensure a unique and memorable stay for any guests Olympic experience.





Shinagawa Prince Hotel

4 Star ★★★★★

4 Chome-10-30 Takanawa, Minato,
Tokyo 108-8611

This family friendly hotel is located only two kilometres from the Tokyo Metropolitan and will provide easy access to the Tokyo Olympic Games.

Shinagawa Prince Hotel holds 13 different restaurants and bars. The hotel has nine indoor tennis courts, theatre, karaoke, both an outdoor and indoor pool, kids club as well as a bowling alley, ensuring guests will always have something to do in between events.

Shinagawa Prince Hotel's location provides some respite from the hustle and bustle of Tokyo city centre. However should guests wish to venture and explore the city Shinagawa's proximity to the subway will enable easy access to all of Tokyo.





JR Blossom Shinjuku

4 Star ★★★★★

2 Chome-6-2 Yoyogi, Shibuya, Tokyo
151-0053

JR Blossom is centrally located in Shibuya and with only a 3 minute walk to Shinjuku station the hotel is easily accessible for the Tokyo 2020 Olympic Games.

JR Blossom is also very close to scenic attractions such as Golden-gai, Shinjuku Gyoen National Garden and the Tokyo Metropolitan Government Building. JR Blossom aims to provide an oasis of serenity mere steps away from the bustling Shibuya.

The on site restaurant Umaya provides various traditional Japanese meals so guests can enjoy cultural eating from the comfort of the hotel. This tranquil hotel mere steps from Shibuya is one the best locations for accessing the Games and one of our closest hotels to the new National Stadium.





Akasaka Excel Hotel Tokyu

4 Star ★★★★★

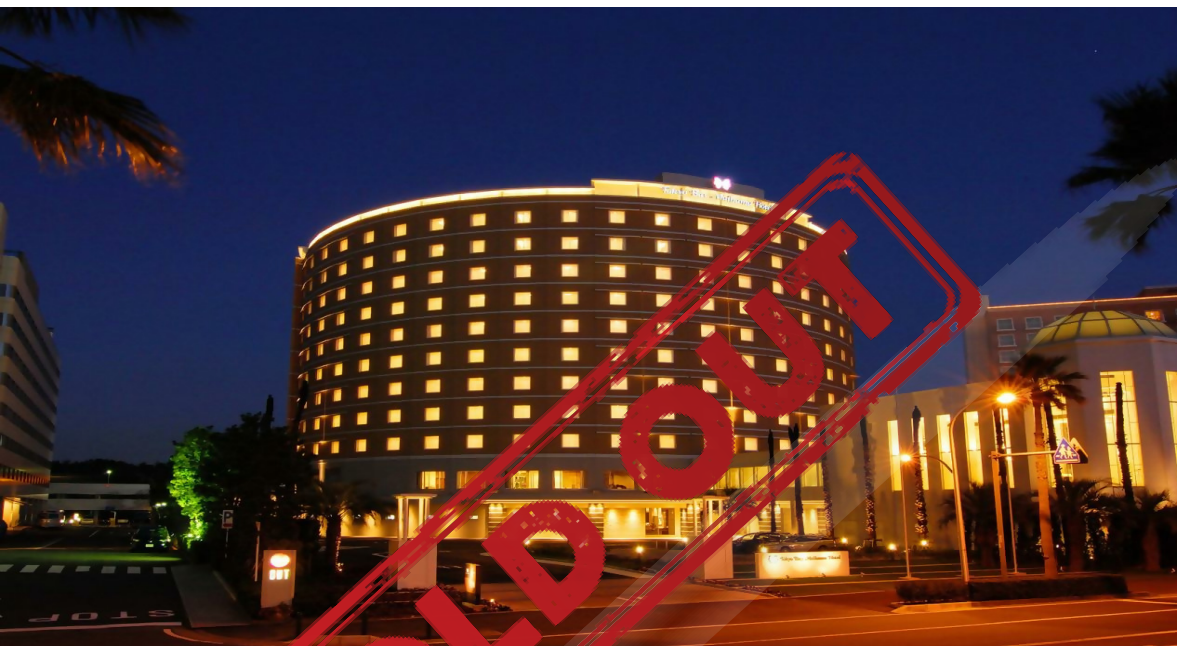
2-14-3 Nagata-cho, Chiyoda-ku, Tokyo, Tokyo-to, 100-0014

Akasaka Excel Hotel is part of vibrant neighbourhood, being only a ten minute bus ride from the night life centre of Roppongi, or a 5 minute walk from the Akasakas Sacas which is home to many restaurants and public art displays. Akasaka is also close to two train stations meaning that guests can easily travel from this central location to their events.

The hotel boasts a gourmet Japanese restaurant on the top floor providing idyllic views of the surrounding city. After dinner guests may enjoy a nightcap at the adjoining cigar bar or walk around Akasakas sacas.

The National Stadium is less than 30 minutes walking distance, or only two stops on the Ginza Line





Tokyo Bay Maihama Hotel

4 Star ★★★★★

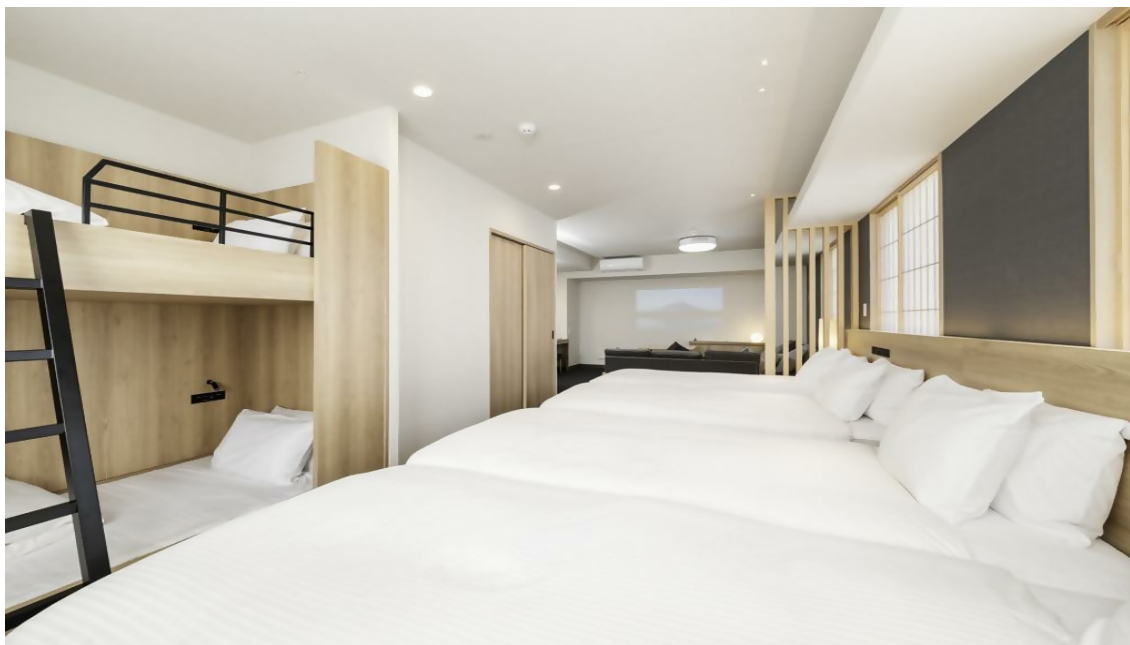
1-34 Maihama, Tokyo Prefecture, 279-0031

Tokyo Bay Maihama Hotel, an official hotel of the Tokyo Disney Resort. The rooms at this hotel have sea, park, and partial sea views, so you are bound to be peeking out at beautiful scenery and close to Tokyo Disneyland, Tokyo Disney Sea, Tokyo Big Sight and Risūpia.

The hotel offers a variety of facilities including a spa and sauna, a bar, restaurants, vending machines, a coffee shop, and room service, so there is an assortment of dining and snacking choices.

The rooms in the Tokyo Bay region are generally larger than central Tokyo and transport links are common, providing easy access to the main lines for Games Time, as well as being close to a number of venues on the Eastern Side of Tokyo





Mimaru Tokyo Ginza East

3.5 Star Aparthotel ★★☆☆

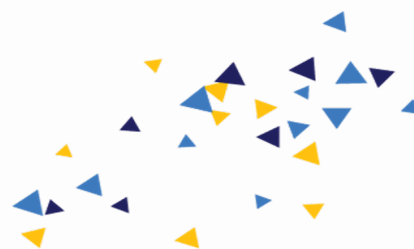
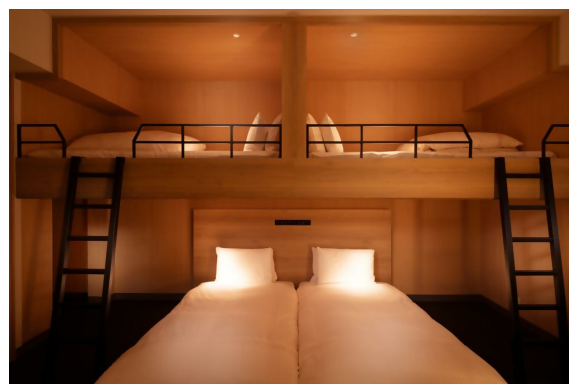
1-16-1, Shintomi, Chuo-ku Tokyo, 104-0041

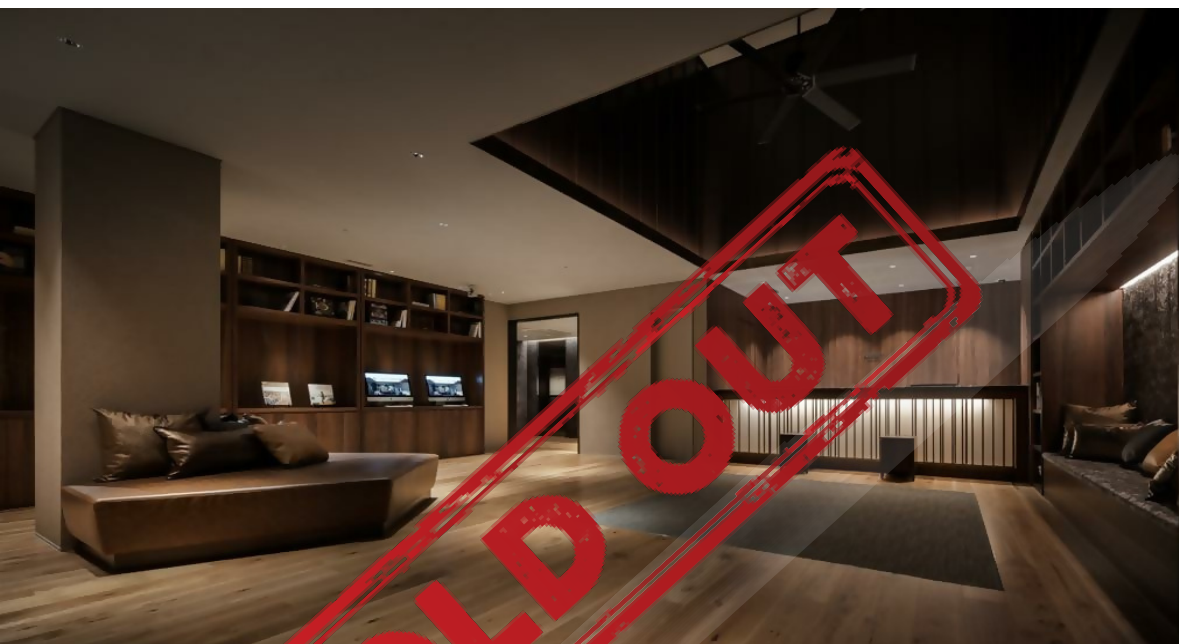
A brand new property that opens in December 2019, the Mimaru Tokyo Ginza East is a perfect Aparthotel for families and groups of travellers looking for a place to stay without having to purchase multiple hotels rooms.

With space in Toyo at an absolute premium, these rooms can easily cater for 3,4,5 or 6 travellers in our Deluxe rooms or Family rooms.

Only three minutes walk to the nearest metro in the highly sought after area of Ginza, what is better than to have your own apartment style hotel.

Towels and garbage is cleaned daily, rooms are serviced every three days. Although there is no breakfast there is plenty of room for you to arrange your own or grab something close nearby.





Nest Hotel Tokyo Hanzomon

3 Star ★★ ★

2-1 8 Hayabusacho, Chiyoda, Tokyo
102-0092

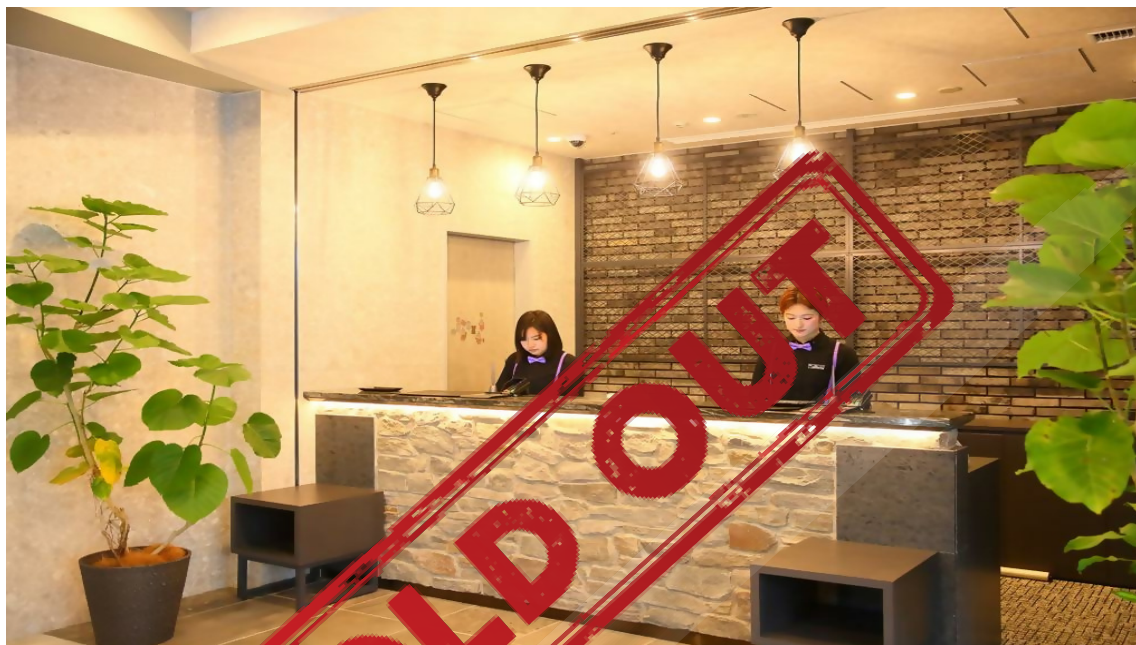
The Nest Hotel is a newly renovated property located in central Chidoyah. The hotel itself is close to several attractions like Tokyo Tower, the Tokyo Imperial Palace and Parliament House. The closest station is the Hanzomon station where guests can easily access greater Tokyo and their Olympic Experience.

Being newly renovated the Nest Hotel comes equipped with brand new appliances and technology including air conditioning, flat screen tv, high-tech toilet and free wi-fi.

Whilst the property does not have a restaurant on the premises it does have 24 hour vending machines and is in close proximity to several restaurants.

This hotel does not offer breakfast facilities but not to worry there are plenty of options close by.





ICI Hotel Akasaka by Relief

3 Star ★★ ★

107-0052 Tokyo Prefecture, Minato-ku
Akasaka 2-17-55

A new property built in 2018, located in the Minato area of Tokyo. The hotel is a short distance from The Japan National Stadium that will host the Opening and Closing Ceremonies, all Athletics sessions and Football Gold. The hotel is in between the Akasaka station and Tameike-sanno station.

All rooms include a flat screen TV, bath, air conditioning, free Wi-Fi and a restaurant on site.

The reception also operates 24 hours and the size of the rooms are above average for a 3 Star hotel in central Tokyo.

Roppongi region is close by, as well is the Japan Imperial Palace.





Kichijoji Tokyu Rei Hotel

3 Star ★★ ★

1-6-3 Kichijoji Minamicho, Musashino,
Tokyo 180-0003

Kichijoji Tokyu Rei Hotel is located in the heart of Musashino. Within walking distance of beautiful Inokashira Park and the very interesting Ghibli Museum the Kichijoji hotel has lots to see in between events.

It is also within a minute walk to Kichijoji station which will provide excellent access to your Tokyo 2020 Olympic events as well as the city itself.

Kichijoji Tokyu Rei Hotel serves a daily buffet breakfast with lunch and dinner being available upon request. With a 24 hour front desk guests are able to check in or out at any time and have front desk assistance at all hours.

A great budget option, only 15 minutes to Shinjuku station.



Example Packages Inclusions



Complimentary KSG Merchandise



KSG personalised meet and greet upon arrival



KSG onsite assistance



Ceremony Tickets



Guided Tours



Event Tickets



Accommodation and upgrades



Transport to events



Emergency Contact Number



Hospitality and Dining options



Events and functions













Hospitality Venue upgrades



Program Overview

A Tokyo 2020 Olympic Games program is divided into a number of separate categories, as follows:

	Diamond	Platinum	Gold	Silver	Bronze	Family
	5+ Star and Suites The best available	5+ and 5 Star, Suites and high end branded hotels	5 and 4.5 Star accommodation	4.5 and 4 Star accommodation	3 and 3.5 Star accommodation	3.5 Star Aparthotel
	A Category event tickets and Ceremony Tickets	A mixture of A and B category event tickets	A mixture of A, B and C category event tickets	A mixture of B, C and D category event tickets (some sports A)	A mixture of C and D category event tickets (some sports B)	A mixture of C and D category event tickets (some sports B)
	Ability to purchase additional tickets	Ability to purchase additional tickets and upgrade ticket category	Ability to purchase additional tickets and upgrade ticket category	Ability to purchase additional tickets and upgrade ticket category	-	Ability to purchase additional tickets and upgrade ticket category
	Exclusive dining options and some meals included	Exclusive dining options and some meals included	Some meals included	Breakfast included	-	-
	Personalised meet and greet on arrival, private transfers	Personalised meet and greet on arrival, private transfers	Meet and greet on arrival, transfers to and from hotel	KSG support staff on arrival to hotel	KSG support staff on arrival to hotel	KSG support staff on arrival to hotel
	Dedicated account manager and Games Time support	Dedicated account manager and Games Time support	Games time HQ support staff	Games time HQ support staff	Games time HQ support staff	Games time HQ support staff
	Tours and Experiences included	Tours and Experiences included	Tours and Experiences included	(Optional add on)	(Optional add on)	(Optional add on)
	Hospitality upgrades subject to availability	Hospitality upgrades subject to availability	Hospitality upgrades subject to availability	-	-	-
	Flight options provided when required	Flight options provided when required	-	-	-	-
	Specialised Invited Olympic Games experiences	-	-	-	-	-



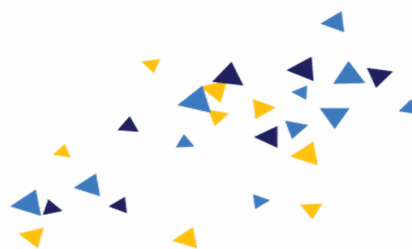
Tokyo Olympics 2020 optional add-ons

Whilst visiting Tokyo for the 2020 Summer Olympic Games, there are a number of add-ons that can be organised to make the most of the Tokyo 2020 experience.

Optional add-ons will include a choice of a day trip to Mount Fuji or connecting you with Tokyo Disneyland for a full day fun and experience Disney mixed with a Japanese twist.

For more information about optional add-ons Visit www.kingdomsg.com , email info@kingdomsg.com or call our head office in Australia on **+61 2 9904 9225**

All tours may be subject to change due to subsequent road closures or other Tokyo 2020 event management restrictions.



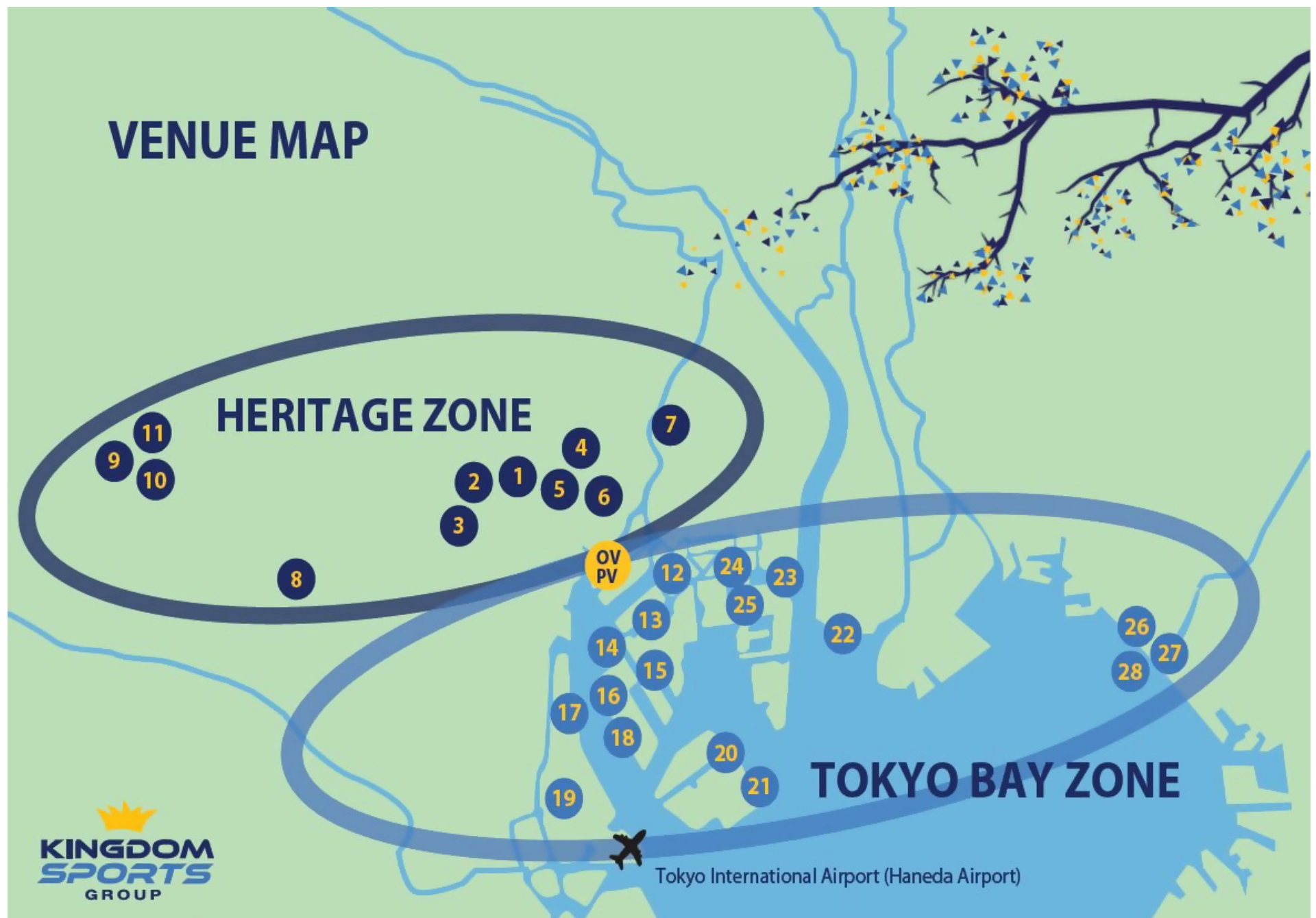
VENUE MAP

HERITAGE ZONE

TOKYO BAY ZONE

OV
PV

Tokyo International Airport (Haneda Airport)



Heritage Zone

Zone	Sports	Venue	Number
Heritage Zone	Opening and Closing Ceremony, Athletics, Football	Olympic Stadium	1
Heritage Zone	Table Tennis	Tokyo Metropolitan Gymnasium	2
Heritage Zone	Handball,	Yoyogi National Stadium	3
Heritage Zone	Judo, Karate	Nippon Budokan	4
Heritage Zone	Athletics (Race Walk)	Imperial Palace Garden	5
Heritage Zone	Weightlifting	Tokyo International Forum	6
Heritage Zone	Equestrian (Dressage, Eventing, Jumping),	Equestrian Park	8
Heritage Zone	Badminton, Modern Pentathlon (Fencing)	Musashino Forest Sports Plaza	9
Heritage Zone	Football, Rugby, Modern Pentathlon (Swimming, Fencing, Riding, Laser-run)	Tokyo Stadium	10
Heritage Zone	Cycling (Road)	Musashinonomori Park	11



Visit www.kingdomsg.com or call **+61 2 9904 9225**

Tokyo Bay Zone

Zone	Sports	Venue	Number
Tokyo Bay Zone	Volleyball (Volleyball)	Ariake Arena	12
Tokyo Bay Zone	Gymnastics	Ariake Gymnastics Centre	13
Tokyo Bay Zone	Cycling (BMX Freestyle, BMX Racing), Skateboarding	Ariake Urban Sports Centre	14
Tokyo Bay Zone	Tennis	Ariake Tennis Park	15
Tokyo Bay Zone	Triathlon, Aquatics (Marathon Swimming)	Odaiba Marine Park	16
Tokyo Bay Zone	Volleyball (Beach Volleyball)	Shiokaze Park	17
Tokyo Bay Zone	Basketball (3X3), Sports Climbing	Aomi Urban Sports Park	18
Tokyo Bay Zone	Hockey	Oi Hockey Stadium	19
Tokyo Bay Zone	Equestrian (Eventing Cross Country)	Sea Forest Cross-Country Course	20
Tokyo Bay Zone	Rowing, Canoe (Sprint)	Sea Forest Waterway	21
Tokyo Bay Zone	Canoe (Slalom)	Kasai Canoe Slalom	22
Tokyo Bay Zone	Archery	Yumenoshima Park Archery Field	23
Tokyo Bay Zone	Aquatics (Swimming, Diving, Artistic Swimming)	Tokyo Aquatic Centre	23
Tokyo Bay Zone	Aquatics (Water Polo)	Tatsumi Water Polo Centre	23
Tokyo Bay Zone	Taekwondo, Wrestling	Makuhari Messe Hall A	26
Tokyo Bay Zone	Fencing	Makuhari Messe Hall B	27
Tokyo Bay Zone	Paralympic	Makuhari Messe Hall C	28



Visit www.kingdomsg.com or call +61 2 9904 9225

Other Venues

Zone	Sport	Venue	Number
Other Venues	Surfing	Tsurigasaki Surfing Beach	29
Other Venues	Basketball (Basketball)	Saitama Super Arena	30
Other Venues	Shooting	Asaka Shooting Range	31
Other Venues	Golf	Kasumigaseki Country Club	32
Other Venues	Sailing	Enoshima Yacht Harbour	33
Other Venues	Cycling (Track)	Izu Velodrome	34
Other Venues	Cycling (Mountain Bike)	Izu MTB Course	35
Other Venues	Cycling (Road)	Fuji International Speedway	36
Other Venues	Baseball/Softball	Fukushima Azuma Baseball Stadium	37
Other Venues	Baseball/Softball	Yokohama Baseball Stadium	38
Other Venues	Football	Sapporo Drome	39
Other Venues	Football	Miyagi Stadium	40
Other Venues	Football	Ibaraki Kashima Stadium	41
Other Venues	Football	Saitama Stadium	42
Other Venues	Football	International Stadium Yokohama	43



Visit www.kingdomsg.com or call +61 2 9904 9225

Terms and conditions

1. Residents of the territories that Kingdom Sports Group have been authorised to sell into by the governing organisation of the specific sporting event ("Event") are able to purchase tickets to that Event (for use by those persons) only through Kingdom Sports Group's (KSG's) website. All purchasers will be required to prove actual residency in those authorised territories in order to buy and receive tickets. Purchasers must not resell (or otherwise in any way deal with) any tickets for profit or gain or to any unauthorised person or entity including but not limited to scalpers, touts or black-market resellers. Where such tickets are suspected to have been sold, used or otherwise dealt with in breach of the Event's ticketing rules and regulations and terms and conditions of ticket use herein, such tickets shall be cancelled immediately without notice to the purchaser and without refund or compensation and the purchaser shall have no claim at either law or in equity against any of KSG, the Event's organizers, or their respective servants, employees, and/or agents in respect of any loss or damage whatsoever arising out of or incidental to such cancellation.
2. All tickets are offered and sold expressly on the basis that the Purchaser has firstly read, accepts and agrees to strictly abide and be bound by both KSG's and the Event organiser's respective Terms and Conditions of Sale and by the use of each ticket and/or by proceeding to purchase a ticket or tickets from KSG the purchaser irrevocably acknowledges and agrees that the purchaser has read and unconditionally accepts and shall be fully and legally bound by all such terms and conditions, including the event organiser's terms and conditions, which form part of these terms and conditions herein..
3. Travel Agents, wholesalers, or any other third-party agencies may NOT submit ticket orders on behalf of individuals or groups. KSG reserves the right to cancel, in its sole and absolute discretion, any such ticket orders at any time where KSG believes such ticket orders do not strictly comply with the Event ticketing rules and regulations. KSG will NOT sell to unauthorised residents or non-residents under any circumstances.
4. Individual tickets are sold only from available inventory on a first-come, first-served basis when there is immediate confirmation of the purchase order and payment for same is made. Non-payment within KSG's terms will result in immediate cancellation, without compensation or any refund, of the ticket order or any part thereof.
5. There are always quantity limitations for individual session tickets. Such limitations will be specified when ticket sales are released live on-line on the KSG website. There is also a limitation on the maximum number of tickets that can be purchased per individual person, such limit being as advised on the KSG website.
6. All ticket purchases are strictly subject to the ticket's pricing information and ticket availability and the Terms and Conditions relating to such tickets as set out herein and also on KSG's website.
7. The specified price category of a ticket means the assigned ticket price corresponding to a designated seating section for a particular session of a sporting event at a specific venue. Package prices may be subject to change without prior notice. All care has been taken to ensure that prices are correct at time of advertising, however if due to circumstances beyond our control there should be airfare, fuel, exchange rate, local tax and/or consumption tax increases, we reserve the right to pass them on unless your tour package has been paid in full. Once full payment is received, any amendments to an order will attract an US\$150 / AU\$250 / ¥15,500 change fee in addition to third party hotel or land operator fees. Tokyo 2020 Paralympic Games orders under AUD\$2,500 can be paid either by credit card with VISA as the preferred payment method or bank transfer. Prices vary from session to session and from venue to venue. Category AA (where available) or category A normally represents the best seats in a venue and therefore are the most expensive, category B are normally second-best seats and second highest price, and so forth in descending order alphabetically. KSG makes no express or implied warranty or representation as to the quality or location of seating, views therefrom, event proximity or aspect in or at any venue.
8. When choosing specific events and sessions, you should make sure there is no overlap in time, and allow at least two to three (2-3) hours between events on the same day. Venues can be geographically spread throughout the cities, so when booking tickets, the purchaser is solely responsible for ensuring that the purchaser and the purchaser's party have allowed adequate travel time between accommodation and the venues, between the venues themselves, for queues and security checks, and have allowed for any other possible or unforeseen delays.
9. Invoices for Tokyo 2020 Olympic Games tickets and packages are listed in USD. For other events, invoices will be raised in the Event's host country's currency and/or US Dollars and/or Australian Dollars as may be applicable. All exchange rates shall be in accordance with the relevant policies of the Event organiser. Payments made via direct deposit will be made in such currency as KSG shall direct, in accordance with the Event organiser's invoicing and currency policies. Such payments will be charged by KSG and paid by you in the KSG specified currency by way of electronic cash transfer. For payments via credit card, there is a limit of up to US\$1,500. VISA is the preferred credit card for the Olympic Games. MasterCard is the preferred card for Rugby World Cup. Please note that your credit card will be charged upon confirmation by KSG of your order, and not at a later time. If the credit card entered is not valid or is declined, your ticket order will immediately be cancelled without notice of any kind, and you have no claim against KSG by reason of such cancellation.



10. All tickets will be shipped or made available for collection for an extra fee per ticket order, which fee is payable in addition to the cost of the tickets. Shipments will only be sent to the successful ticket purchasers after ticket collection by KSG from the Organising Committee in the host country. Please ensure that you give full and correct address details with correct numbers and spelling as KSG will not be liable for any non-delivery arising out of any misdescribed or false name and/or address for delivery of tickets. P.O. Boxes are NOT acceptable. The address provided must be a real street address where a person over the age of 18 years is present to accept and sign for delivery.
11. Seating requests between separate orders cannot be processed. Seat locations will not be known in advance of actual allocation of tickets, and KSG makes no warranty or representation as to actual seat numbers to be allocated or seating locations within the event venue.
12. A ticket purchase confirmation will be sent to you via e-mail upon processing of your order. This will confirm the Tickets purchased and the total price of those tickets inclusive of shipping.
13. Once a Ticket Purchase Confirmation is issued, the ticket order is final and is non-cancellable and non-refundable under any circumstances, and remains strictly subject to the Terms and Conditions of sale and use. Purchasers are strongly advised to ensure that they have and at all times maintain full and comprehensive travel insurance in respect of all aspects of their proposed travel to the Games including in respect of lost or stolen or damaged tickets, which cannot be replaced at any time.
14. All communication regarding the account will be emailed to the purchaser only. The Purchaser is responsible for keeping KSG fully informed of any changes to the billing, contact details including email, and shipment details provided.
15. In the event of any cancellations, other than where the event itself is officially cancelled by the sporting event's official organising entity, there shall be no refunds of any monies paid to KSG in respect of your tour program, irrespective of the reason for such cancellation.
16. No refund is available for any cancellations at any time or for any reason whatsoever, save and except where a programmed event has been officially cancelled (not postponed or delayed) by the sporting event's official organising entity and that official organisation provides to KSG a cash refund (irrespective of the amount), and to that extent and to that extent only, you are entitled to only have that specific refund as remitted to KSG paid across to you less any banking or transactional charges we may incur as a result of sending you said such funds. Otherwise in all other cases, no refunds are available at any time for any monies paid. There are no refunds on accommodation, meals, tours, or other services or goods at any time, even if the event itself is postponed, delayed or officially cancelled by the sporting event's official organising entity. It is strictly incumbent upon you and your travelling group to have adequate travel insurance at all times.
17. For all travel it is your responsibility to ensure that you and each person travelling with you has a valid passport and where required all necessary visas and travel documentation and meet all entry requirements of the Event's host country. All passports must have an expiry date no less than 6 months from commencement of entry into the Event's country. The client is solely responsible at all times throughout their trip for their health and all health requirements, vaccinations and travel insurances are the responsibility of the client. KSG is not liable for and no claim can be made against KSG should you and any of your party be or are unable to travel to the Event or the Event's geographical location, for any reason whatsoever howsoever arising.
18. Variations to transfer and hotels may be necessary due to unforeseen circumstances beyond our control; and in such case KSG reserves the right to vary/omit/substitute any hotels or other ground activities as deemed suitable by reason of any force majeure. KSG reserves the sole and exclusive right and is entitled at any time to vary any hotels or other ground activities for operational reason provided that the alternative accommodation and/or ground activity provided by KSG is of a similar or better standard to that originally proposed, and in this regard you agree that you have no claim against KSG for any reason relating to the matters being the subject of this clause 18.
19. Travel Insurance is recommended at time of booking. We recommend the client arranges and effects comprehensive travel insurance prior to travel.
20. These terms and conditions are paramount and at all times supersede any and all prior representations and agreements. Where there is any inconsistency between these terms and conditions and any other terms and conditions published by KSG, to the extent of such inconsistency these terms and conditions shall prevail.
21. These terms and conditions are governed by the law of New South Wales, Australia and any dispute regarding same shall be determined by the Courts in Sydney, New South Wales Australia.